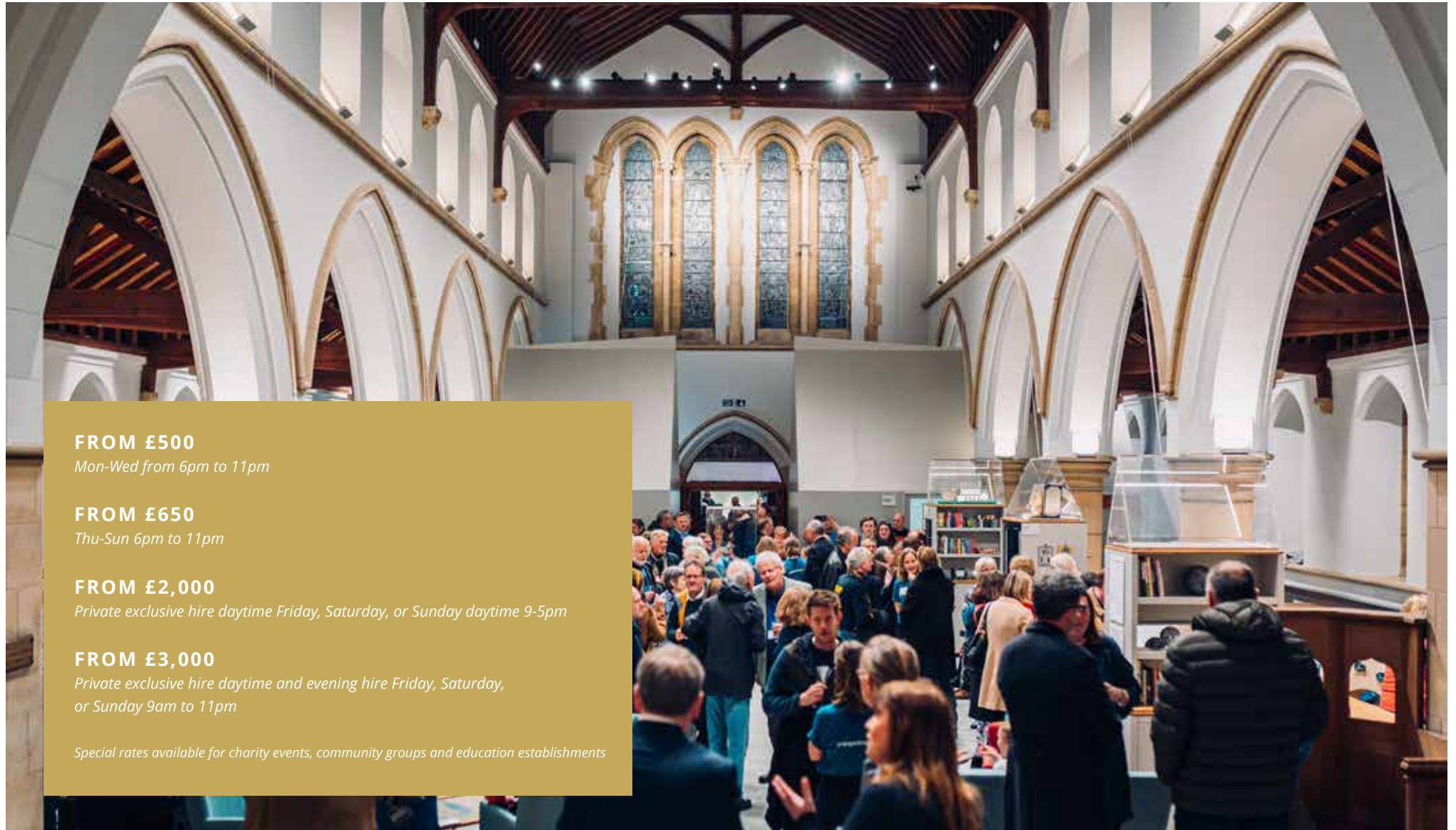


**Places to work, meet, learn and connect.**

Chichester Community Development Trust's spaces for hire.

# THE CHAPEL MAIN SPACE

Graylingwell Chapel, Blomfield Drive, Graylingwell Park, Chichester, PO19 6BZ



## **FROM £500**

*Mon-Wed from 6pm to 11pm*

## **FROM £650**

*Thu-Sun 6pm to 11pm*

## **FROM £2,000**

*Private exclusive hire daytime Friday, Saturday, or Sunday daytime 9-5pm*

## **FROM £3,000**

*Private exclusive hire daytime and evening hire Friday, Saturday, or Sunday 9am to 11pm*

*Special rates available for charity events, community groups and education establishments*





### CAPACITY

THEATRE STYLE	175-200
U SHAPE	100
PARTY	250
STANDING	300



The Chapel Main space is a wonderful venue for performance, workshops, cinema screenings, lectures & talks, corporate events and larger gatherings.

The Chapel Main space can be hired from 4.30pm till 11pm Monday-Saturday and all day Sunday. Bespoke timing available on request.

### BOOK THE CHAPEL MAIN SPACE

**email:** [bookings@chichestercdt.org.uk](mailto:bookings@chichestercdt.org.uk)  
**telephone:** 01243 537526

### FACILITIES INCLUDED:



Screen



Projector



Super fast wifi



Hearing loops x 12



Underfloor heating



Sound and light system\*



Microphones x 2



Lapel mics x 2

\*Technical support (sound and stage lighting) included

### ALSO AVAILABLE TO HIRE:

Front of House service: £15 per hour

### CATERING OPTIONS:

Catering available for an additional cost – you can use our in-house catering team or one of our recommended suppliers. Details available on request.

# THE CHAPEL LEARNING ROOMS

Graylingwell Chapel, Blomfield Drive, Graylingwell Park, Chichester, PO19 6BZ





### CATERING OPTIONS:

Can be fully catered, from tea and coffee to hot or cold lunch, please enquire.

### CAPACITY

BOARDROOM

10



The Chapel Learning Rooms flexibly accommodate a range of activities for up to 12 people.

With its access to sink/wash-up space, The Wates Family Learning Room makes the perfect space for workshops, art/craft-making activities as well as meetings and training.

Wellington Grange Learning Room is a warm, inviting space perfect for meetings, therapy, counselling and smaller classes.

Available for hire hourly, 1/2 day or full day Mon-Sat, 8am-4pm.

### BOOK THE CHAPEL LEARNING ROOMS

**online booking:** [graylingwellchapel.com/book-your-space/](http://graylingwellchapel.com/book-your-space/)  
**email:** [bookings@chichestercdt.org.uk](mailto:bookings@chichestercdt.org.uk)  
**telephone:** 01243 537526

### WATES ROOM FACILITIES:



Sink and messy play space



Air conditioning



Hearing loops x 12



Sound and light system



Microphones x 2



Lapel mics x 2

### WELLINGTON ROOM FACILITIES:



Air conditioning



Flat screen tv and screen



Projector



Hearing loops x 12



Sound and light system



Microphones x 2



Lapel mics x 2



# THE CHAPEL MEETING TABLES

Graylingwell Chapel, Blomfield Drive, Graylingwell Park, Chichester, PO19 6BZ



**£7.50/HOUR**

*For chargeable meetings/events*

**FREE**

*Free for charity sector and free meetings (non chargeable)*



We have five meeting tables available for hire in the main space of the Chapel. Each table can seat up to 8 people, perfect for social clubs, study groups or meetings that require a less formal or private setting.

Available for hire hourly Mon-Sat, 8am-4pm.

#### FACILITIES INCLUDED:



Super fast wifi



Hearing loops x 12



Underfloor heating

#### CAPACITY

BOARDROOM

10

#### BOOK THE CHAPEL MEETING TABLES

**online booking:** [graylingwellchapel.com/book-your-space/](https://graylingwellchapel.com/book-your-space/)  
**email:** [bookings@chichestercdt.org.uk](mailto:bookings@chichestercdt.org.uk)  
**telephone:** 01243 537526

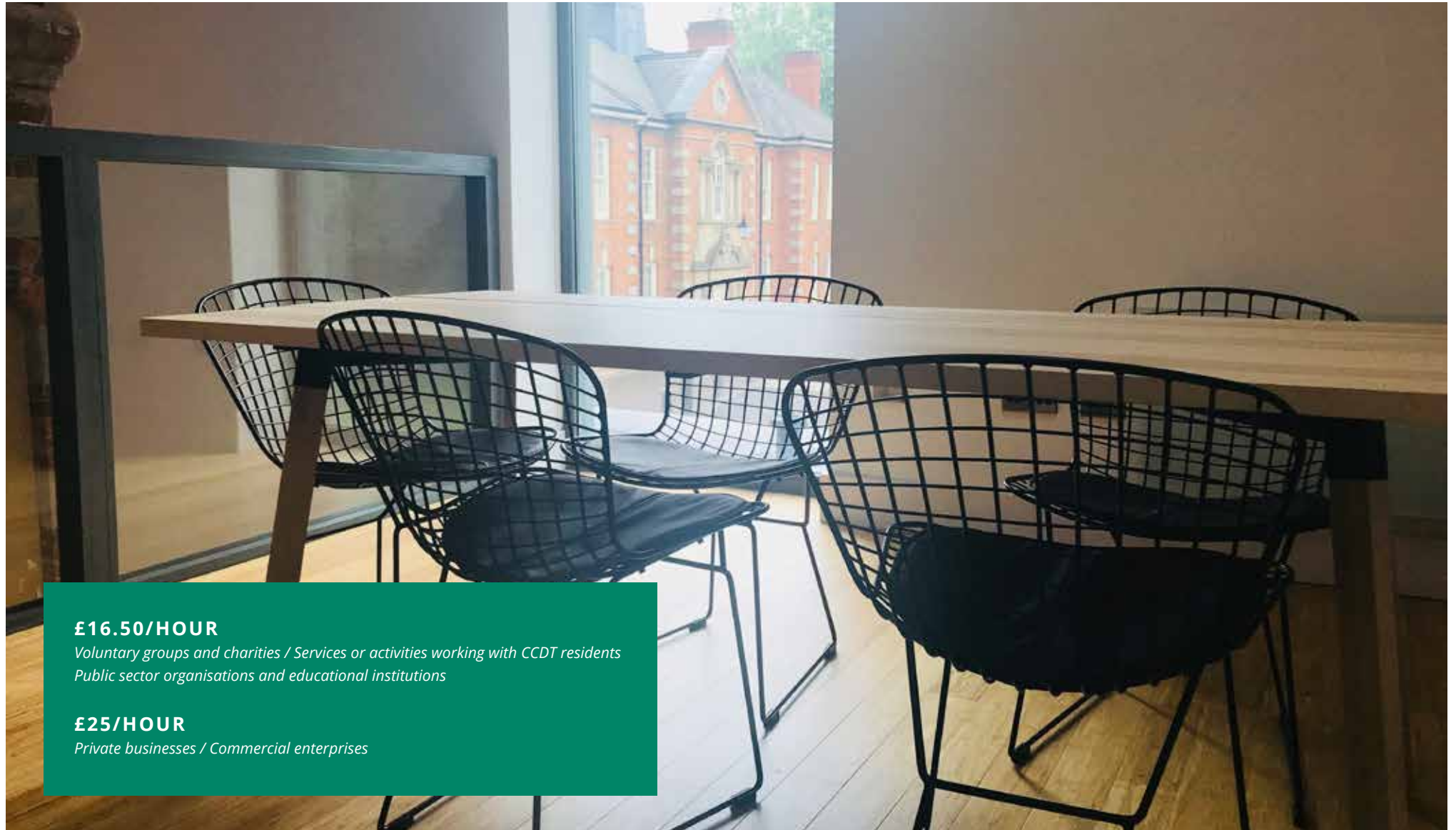
#### CATERING OPTIONS:

Can be fully catered, from tea and coffee to hot or cold lunch, please enquire.



# THE WATER TOWER

Graylingwell Park, Blomfield Drive, Chichester, PO19 6BZ



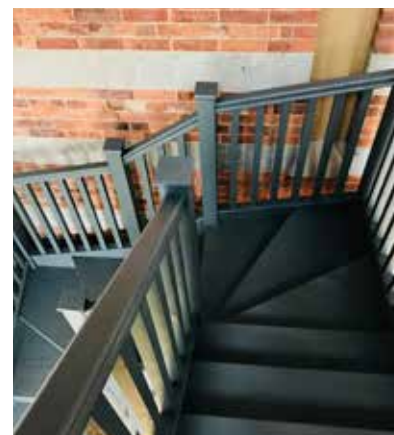
## **£16.50/HOUR**

*Voluntary groups and charities / Services or activities working with CCDT residents  
Public sector organisations and educational institutions*

## **£25/HOUR**

*Private businesses / Commercial enterprises*





The Water Tower is a double storey space with downstairs measuring about 26m<sup>2</sup> and an 15m<sup>2</sup> upstairs mezzanine. It will make the perfect venue for your next private function, networking event, business meeting, workshop or training course.

**Kitchen:** Ground floor kitchenette equipped with kettle, coffee machine, microwave and mini-fridge along with mugs and glasses for 15 and small selection of crockery and cutlery. Additional crockery, cutlery and wine glasses available on request.

**Main space:** Main two-storey space: ground floor area with large glazed frontage measuring approximately 26m<sup>2</sup> with meeting table to seat 4-6 and WC accessed from the kitchen. Additional beautiful mezzanine floor equipped with two large wooden tables and 10 chairs. Projector available on request.

Available for hire after 5pm Monday-Friday and all day on Saturdays and Sundays.

#### FACILITIES INCLUDED:



Printer



Wi-Fi



Flip chart



Retractable projector screen



Microwave

#### CATERING OPTIONS:

Can be fully catered, from tea and coffee to hot or cold lunch, please enquire.



#### CAPACITY

BOARDROOM	10
PARTY	20
STANDING	25

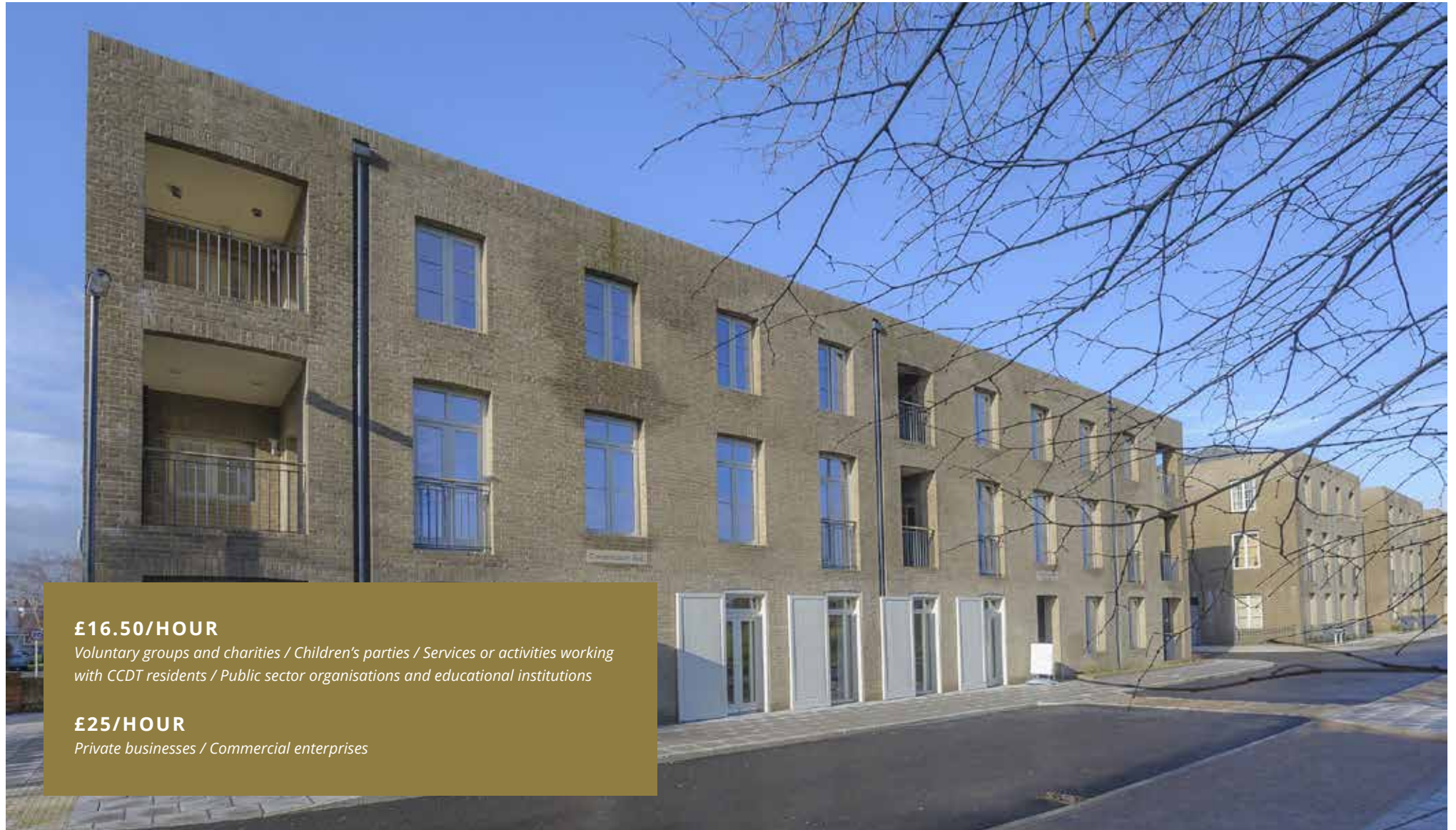
#### BOOK THE WATERTOWER

**email:** [bookings@chichestercdt.org.uk](mailto:bookings@chichestercdt.org.uk)

**telephone:** 01243 537526

# THE COMMUNITY HALL

Donegall Avenue, Roussillon Park, Chichester, PO19 6DF



## **£16.50/HOUR**

*Voluntary groups and charities / Children's parties / Services or activities working with CCDT residents / Public sector organisations and educational institutions*

## **£25/HOUR**

*Private businesses / Commercial enterprises*





Overlooking the green and play area at Roussillon Park, the Community Hall is a well-equipped purpose built hall with its own kitchen facilities. The floor-to-ceiling windows and natural daylight enhance the feeling of space in the large open plan area measuring 13.5m x 7.10m (96 m sq/ 1031 ft sq).

**Kitchen:** fully-equipped kitchen with serving hatch, dishwasher, under counter fridge and freezer, electric oven, hob and extractor hood. Kitchen utensils and equipment provided including china, glasses and cutlery for 60 and children's cutlery, plates and bowls for 30.

**Main room:** Ground level with full disabled access via the lobby entrance. The room contains four floor-to-ceiling windows, two of which include glazed doors and all of which include top lights for ventilation. A projector and retractable screen are available for presentations. Full-height cupboards store folded tables and stackable chairs when they are not in use. 60 chairs and 20 tables. Free Wi-Fi is available.

The WC is accessed from the lobby and is sized and designed to allow for disabled access. It also has a baby changing table.

#### FACILITIES INCLUDED:



Printer



Wi-Fi



Flip chart



Retractable projector screen



Microwave



Dishwasher



Fridge and freezer



Children's tables and chairs



Oven and hob



Air conditioning

#### ALSO AVAILABLE TO HIRE:

Projector

#### CATERING OPTIONS:

Catering is available (staff dependant). Please enquire.

#### CAPACITY

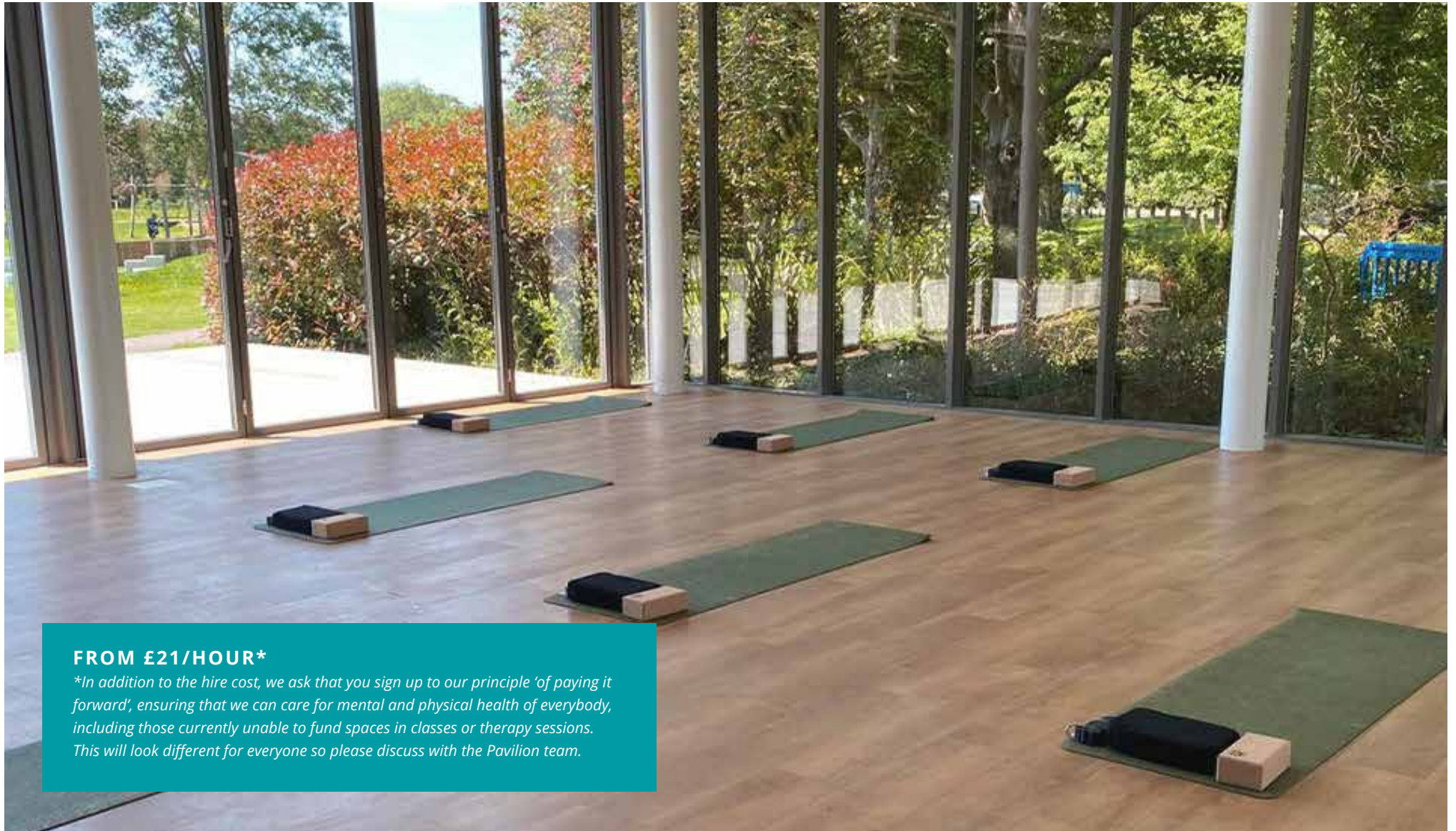
THEATRE STYLE	60
U SHAPE	60
BOARDROOM	60
PARTY	60
STANDING	120

#### BOOK THE COMMUNITY HALL

**online booking:** [chichestercdt.org.uk/book-community-hall](http://chichestercdt.org.uk/book-community-hall)  
**email:** [bookings@chichestercdt.org.uk](mailto:bookings@chichestercdt.org.uk)  
**telephone:** 01243 537526

# THE PAVILION STUDIO

The Pavilion, Connolly Way, Graylingwell Park, Chichester, PO19 6DA



## FROM £21/HOUR\*

*\*In addition to the hire cost, we ask that you sign up to our principle 'of paying it forward', ensuring that we can care for mental and physical health of everybody, including those currently unable to fund spaces in classes or therapy sessions. This will look different for everyone so please discuss with the Pavilion team.*





#### FACILITIES INCLUDED:



Staff area and meeting room



Free Wifi



Sound system



Air conditioning



The Pavilion studio is a light-filled, airy room with large windows that look out over Havenstoke Park and could be used for a variety of larger classes such as Tai Chi, Qi Gong, Pilates, Yoga, Zumba, dance, theatre, kids classes, music or anything else that you have in mind.

This 9x9m space, will fit approximately 20 students on mats, or more for dance and other types of classes.

Our studio can easily be converted with chairs and tables set up. This creates a wonderful space for events, workshops & courses.

For each hour booking of the studio we provide 1.5 hours of time – this gives you a chance to both ensure the cleanliness of the space after your class, but to also spend time with those participating, ensuring the community can connect and help reduce isolation through the classes being delivered.

#### CATERING OPTIONS:

Can be fully catered, from tea and coffee to hot or cold lunch, please enquire.



#### CAPACITY

WITH MATS	≈ 20
SEATED ON CHAIRS	34
STANDING	40

#### BOOK THE PAVILION STUDIO

**email:** [info@thepavilionchichester.com](mailto:info@thepavilionchichester.com)

**telephone:** 01243 537526

# THE PAVILION THERAPY ROOMS

The Pavilion, Connolly Way, Graylingwell Park, Chichester, PO19 6DA



## £11/HOUR\*

*\*In addition to the hire cost, we ask that you sign up to our principle 'of paying it forward', ensuring that we can care for mental and physical health of everybody, including those currently unable to fund spaces in classes or therapy sessions. This will look different for everyone so please discuss with the Pavilion team.*





Our five light & peaceful treatment rooms are newly refurbished with comfortable chairs and soft lighting for relaxation, and sound proofed for privacy and relaxation.

We have two bigger rooms, one is equipped with a massage table and the other has space for one if you wish to bring your own. These rooms can be hired by 1/2 day and full day only.

We have 3 standard sized rooms, perfect for talking therapies, coaching etc. These can be hired by the hour, 1/2 day or full day.

### BOOK THE PAVILION THERAPY ROOMS

**email:** [info@thepavilionchichester.com](mailto:info@thepavilionchichester.com)  
**telephone:** 01243 537526

#### FACILITIES INCLUDED:



Bright and airy welcome  
and spill out area



Staff area and meeting room



Free Wifi

# THE WILD SPACE

Havenstoke Park, Connolly Way, Graylingwell Park, Chichester, PO19 6DA



**£16.50/HOUR**

**PARTIES:  
£50 FOR 2.5 HOURS**

The Wild Space is a self-hire venue with a large shelter. Located at one end of Havenstoke Park, it makes a perfect setting for nature classes, or private outdoor gatherings. Please note: the site has no toilet facilities.

---

## **BOOK THE WILD SPACE**

**email:** [nina@chichestercdt.org.uk](mailto:nina@chichestercdt.org.uk)  
**telephone:** 01243 537526



# HAVENSTOKE PARK

Havenstoke Park, Connolly Way, Graylingwell Park, Chichester, PO19 6DA



**FROM £40 PER MONTH**

*One to One Sessions only (no group sessions)\**

**FROM £80 PER MONTH**

*One to One & Group Sessions\**

*\*Fees are subject to the number of sessions held each month and size of the group*



Run outdoor fitness classes or personal training sessions in Havenstoke Park. We license fitness providers to ensure that; the park and areas are protected and maintained, access to and use of public open space is preserved for all, and that fitness operators hold appropriate qualifications and are insured.

---

## APPLY FOR A LICENSE

**online:** [thepavilionchichester.com/havenstokepark](https://thepavilionchichester.com/havenstokepark)

**email:** [bookings@chichestercdt.org.uk](mailto:bookings@chichestercdt.org.uk)

**telephone:** 01243 537526

# Bespoke Packages for unique needs.

Want something a bit different? Perhaps a team mind mapping morning in the Chapel for the team followed by lunch and a yoga class surrounded by a living wall and parkland? With catering options running from tea, coffee and a pastry to canapés or three course meals for 70+ people we are perfectly placed to provide you with the perfect solution.

## SAMPLE DAYS

Meeting room for 10 with tea and coffee from 10 till 1pm - £70  
Lunch of salads, crudites, dips and a sweet treat to finish from £9.50pp  
Afternoon studio hire and yoga session - £10 a head

Sunday hire of Chapel for sit down family and friends lunch from £20 a head  
(minimum numbers apply)

---

## CONTACT US FOR A BESPOKE PACKAGE

**email:** [bookings@chichestercdt.org.uk](mailto:bookings@chichestercdt.org.uk)  
**telephone:** 01243 537526







**"Every care and attention was thought of and it was so lovely to have the music too. All your helpers where so kind and it was all perfect, food delicious! I treated myself to a brownie! I cannot fault anything!!!**

**I think the volunteers had a great time and I am sure some of them may even volunteer!"**

**- Mandy Cleaver, Sussex Community NHS Foundation Trust**

---

**"Working with the team at CCDT to organise our staff Summer party at Graylingwell Chapel was a complete joy from start to finish. They delivered a wonderful, relaxed event for our staff and their families with so many lovely thoughtful touches.**

**The feedback from our colleagues was overwhelmingly positive with one saying the event "reminded us of the atmosphere that makes Wiley so special".**

**I hope I have the opportunity to work with Elizabeth and Clare on more events in the future and would not hesitate to recommend them and their very special venue."**

**- Karen Wootton, Wiley**

---



# Inspirational spaces for a vibrant community.

We offer great meeting rooms, workspaces, halls and other venues for your event, business or charity, all located close to the heart of Chichester. We believe in bringing people together and supporting our community by offering more than just a venue for hire.

Our spaces are owned by you and cared for by us. We aim to help small charities, voluntary organisations and business start ups to become successful and sustainable by creating spaces that will inspire you and allow you to grow. All profits from the hire of our buildings are reinvested in the local community.

By choosing one of our buildings, you are investing in the future of Chichester and the local neighbourhood whilst helping us support projects that create local opportunities, employment and build community spirit.



For full details of our spaces, visit:  
[chichestercdt.org.uk](http://chichestercdt.org.uk)  
[graylingwellchapel.com](http://graylingwellchapel.com)  
[thepavilionchichester.com](http://thepavilionchichester.com)